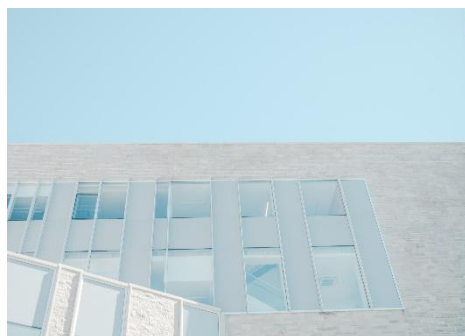
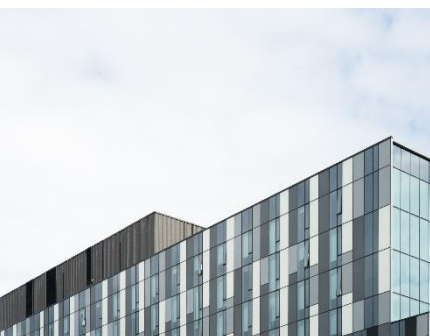




Link Vue System Pty Ltd.

PRODUCT CATALOGUE

Unmanaged Industrial Ethernet Switch



☒ Smart

16*10/100/1000Base-T + 4*1000Base-X**Industrial Ethernet Switch****LV-IS6020G-4GX16GT****Features:**

- 16*10/100/1000Base-T RJ45 ports, 4*1000Base-X SFP slots
- Redundant power DC 12-58V input with polarity reverse/over-voltage/over-current protection
- Support one channel output relay alarm (terminal block Pin 5/6) for DC power failure
- Support powerful Dip switch function:
 - 1.Link aggregation; 2. Flow control; 3. QoS(1-2 ports); 4.Broadcast storm restrain
- Support 10K Bytes Jumbo frame
- Support 6KV surge protection and ESD: Air-15kV, Contact-8kV Protection
- IP40 fan-less and Din-rail hardware design
- Operation temperature: -40 °C~+75°C

Overview:

The Link Vue LV-IS6020G-4GX16GT is the highly reliable industrial Ethernet switch with 16-port 10/100/1000-T RJ45 and 4-port 1000Base-X SFP slots. It is featuring with link aggregation, flow control, QoS(1-2 ports) and broadcast storm restrain function, which all can be configured by the Dip switch on the top panel.

LV-IS6020G-4GX16GT is also a high cost-effective easy-to-use device, which provides essential industrial Ethernet networking function, including wide range power input 12-58VDC, redundant power design with polarity reverse/over-voltage/over-current protection, robust IP40 fan-less housing with Din-rail installation, wide operation temperature from -40°C to 75°C as well as high-level EMI/EMC capability. It is the best choice for heavy industrial factory, transportation, oil & gas, chemical, IP Surveillance and processing automation area where environmental conditions are harsh and critical.

Technical specification:

Model No.	LV-IS6020G-4GX16GT	
Interface	Fiber ports	Copper RJ45 ports
	4	16
Ethernet	16*10/100/1000Base-T 4*1000Base-X	
Alarm port	One relay output for power failure. Alarm relay current carry ability: 1A@24VDC	
Standard	IEEE 802.3 10Base-T Ethernet IEEE 802.3u Fast Ethernet IEEE 802.3ab Gigabit Ethernet IEEE 802.3x Full-Duplex Flow Control IEEE 802.3az Energy Efficient Ethernet	
Dip Switch	1. Link aggregation 2. Flow control 3. QoS(1-2 ports) 4. Broadcast storm restrain	
LED Indicators		
P(Power indicator)Green	Off: the device is power off or failed	
	On: the device power on is normal	
S(System indicator) Red	Off: the chip is normal	
	On: thechipread/writeisunnormal	
1-16(Copper ports)	Green indicators	Yellow indicators
	Off: ports link down	Off: port on 10/100M
	On: ports link up	On: port on 1000M
	Blinking:data on TX/RX	
17-20(Fiber ports) Green	Off: ports link down	
	On: ports link up	
	Blinking: data on TX/RX	

Power parameters	
Input voltage	12-58VDC, redundant power input
Input current	0.8A Max
Total power consumption	Full loading≤10W
Connector	Removable 6-pin terminal block, Pin 5/6 for relay alarm output
Reverse polarity protection	Support
Over-voltage protection	Support
Over-current protection	Support
Switching features	
Switching capacity	52G
Packet forwarding rate	77.3Mpps
MAC address table	16K
VLAN	4K
Buffer	2M
Forwarding delay	<5us
Jumbo Frame	Support 10Kbytes
MDX/MIDX	Support
Watchdog	Support
Network Topology	
Star topology	Support
Bus topology	Support
Tree Topology	Support
Mechanical structure	
Case protection	IP40
Installation method	Din-rail
Dimension(W*D*H)mm	90*115*158mm
Weight	1.85Kg
Operating environment	
Operating temperature	-40℃+75℃

Storage/transportation temperature	-40°C+85°C
Relative humidity	5%~95% (non-condensing)
Industry standard	EMI: FCC Part 15B Class A
	Surge protection of power: IEC 61000-4-5 6KV/4KV (8/20us)
	Surge protection of Ethernet ports: IEC 61000-4-5 6KV/2KV (10/700us)
	RS: IEC 61000-4-3 80 MHz-1 GHz: 10 V/m
	EFT: IEC 61000-4-4 power interface: 4K; Ethernet ports: 2K
	CS: IEC 61000-4-6 10V
	ESD: IEC 61000-4-2 Level 4 (8K/15K)
	Shock: IEC 60068-2-27
	Free fall: IEC 60068-2-32
	Vibration: IEC 60068-2-6
Certification	CCC/CE/FCC/RoHS
Warranty	5 years

Order information:

Model	Description
Link VueG-4GX16GT	Industrial Ethernet switch with 16*10/100/1000Base-T RJ45 ports and 4*1000Base-X SFP slots,DC12-58V input, redundant dual power supply, Din-rail installation. Operation temperature: -40°C~+75°C





LINK VUE SYSTEMS PTY LTD.

Vue System

LINK VUE SYSTEMS PTY LTD.

Add.: Head Office: 45 Evans Street, Balmain. NSW. AUSTRALIA

AUS-Mobile: + 61- 0415541106,

Mobile: +91 9811698640 , +91-9811247237,

E-mail: manish@linkvuesystem.com

E-mail: manav.chandra@linkvuesystem.com

<http://www.linkvuesystem.com.au>

<http://www.linkvuesystem.com>